

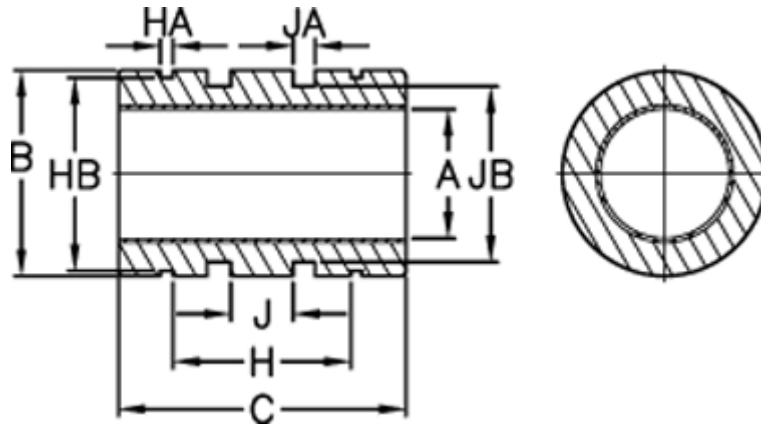
Data Sheet



Article number: 50100103

Description: Standard bearing FMC 10 E

Measures



A max	= 10.085000000000001	For o-ring	= 15,5 x 2	Static load
A min	= 10.063000000000001	H	= 19.399999999999999	Surface area
B max	= 19	HA	= 1.32	
B min	= 18.978999999999999	HB	= 18	
Bush weight kg	= 0.014	J	= 5.63	
C max	= 29	JA	= 2.44	
C min	= 28.745999999999999	JB	= 15.7	
Concentric mm	= 0.0254	Ret ring part no (DIN 471)	= 19	